

STØTTET AF

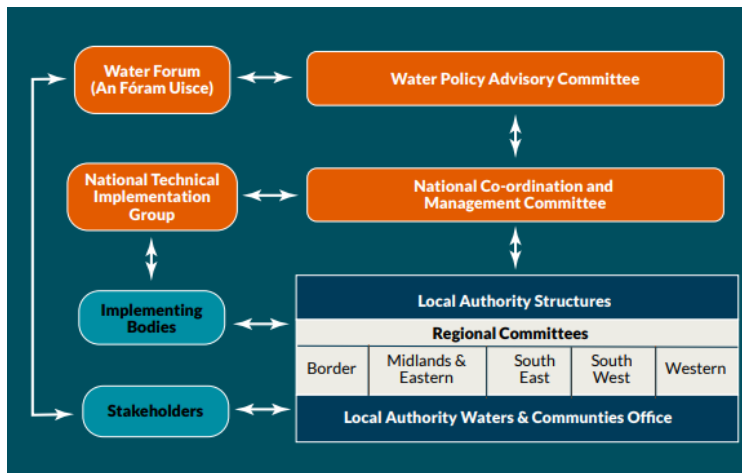
# Promilleafgiftsfonden for landbrug

## Visiting Ireland - concerning local involvement in water governance

11<sup>th</sup> – 15<sup>th</sup> November 2019

### Background

In 2018 there was made a change in the Irish water governance structure towards a bottom up approach and stronger collaborative governance. In a Danish context this change is very interesting because in Denmark there is an urgent need for finding a new governance structure to deal with the need for a more targeted and multifunctional approach when implementing measures.



**A new collaborative approach to delivering water quality improvements in Ireland**  
Margaret Keegan & Noel Meehan?  
1. Local Authority Waters Programme, Ireland  
2. Agricultural Sustainability and Advice Programme, Teagasc

**1. INTRODUCTION**  
The Government of Ireland published its second River Basin Management Plan in 2018, as a requirement of the EU Water Framework Directive. This plan was developed with collaboration and knowledge transfer between all relevant public bodies, and extensive stakeholder and public consultation. The plan sets out a new approach for the protection and management of water quality, which is being delivered through innovative structures and networks at national, regional and local levels. This poster outlines progress to date, with a specific focus on agriculture mitigation measures.

**2. LOCAL AUTHORITY WATERS PROGRAMME**  
The Local Authority (LA) Waters Programme was established to support and coordinate the efforts of public bodies. It is a shared service for 31 LAs.

**3. AGRICULTURAL MITIGATION MEASURES**  
The Agricultural Sustainability Support and Advisory Programme (ASSAP) was established to collaborate with the Catchments Team, in the Priority Areas for Action, where agriculture is a significant pressure.

**4. COLLABORATIVE APPROACH**  
Local Catchment Assessment is a collaborative approach to identify significant water quality issues and related pressure and to develop conceptual understandings of their pollutant pathways and appropriate measures. A critical element is engagement with communities, agencies and stakeholders to share our understanding so that the 'right measure in the right place' is designed and implemented.

- The Catchment Assessment Team gathers all scientific data from all relevant parties, builds a conceptual understanding of the significant issues, pressures and the pathways.
- Engagement at Community Information Meetings, led by the Catchment Assessment Team and Farmers' Specific Meetings, led by ASSAP, allows local knowledge to be taken into account.
- Stream assessments, including macroinvertebrate sampling, chemical analysis and hydro-morphology assessments, are used to refine the location of pollution sources and pathways, which enhance our scientific understanding.
- Where Agriculture is a significant pressure, ASSAP offer free voluntary visits to identify on-farm issues that impact on water quality, where required advice and mitigation actions are provided. Farm visits focus on 3 areas:
  - Farmyard management & practices
  - Nutrient management, application practices & pesticides
  - Farmyard & stream management
- Measures to deal with nutrient loss from farms (point and diffuse)
  - Source Control
  - Mobilisation Controls
  - Pathway Interception
- Tracking and monitoring of measures via the EPA WQD Online Application

**5. OUTCOMES TO DATE**  
Since its launch in mid-2018, this collaborative approach has resulted in the following:
 

- Establishment and training of the Catchment Assessment and ASSAP teams in Integrated Catchment Management and Local Catchment Assessments;
- Increased scientific understanding of 73 catchments through our desk studies and stream assessments;
- Improved working relationships with public bodies and stakeholders; and,
- Building on the community engagement work of the Community Water Officers, the delivery of 25 Community Information meetings and 9 Farmer Specific meetings.

 Armed with a scientific understanding of the significant water quality issues and enhanced stakeholder relationships, we are now commencing our farm visits, where we will propose and agree local measures to improve water quality.

STØTTET AF

## Promilleafgiftsfonden for landbrug

### Program

#### Monday 11<sup>th</sup>

Arriving Dublin 23.15

Clayton Hotel Dublin Airport

#### Tuesday 12<sup>th</sup>

10.30 in the Lyrath hotel in Kilkenny  
Meeting Joe Crockett from Dairy Sustainability Ireland

Hotel Kilkenny College Road

#### Wednesday 13<sup>th</sup>

Meetings in Dublin at Irish EPA  
Block 1 Clonskeagh Square, Richview, Clonskeagh, Dublin 14, Ireland

12-16

Jenny Deakin from Irish EPA  
Cathal O'Donoghue (National University of Ireland Galway)  
Caroline Read, OVERSEER, New Zealand  
Barbara Ollwell (Local Authority Waters Programme)  
Donal Daly (ex-EPA)  
Marie Archbold (Catchments Unit, EPA)  
Philip Blackwell (Department of Agriculture)  
Eva Mockler (Catchments Unit, EPA)

17-18 meeting Thomas Ryan, Irish Farmers' Assosiation (IFA) at Irish Farm Centre Dublin.

Lisnacurran Country House B&B

#### Thursday 14<sup>th</sup>

10.30 at AFBI, Hillsborough, North Ireland meeting with Dr Sara Vero from Soil and Water Research, CatchmentCARE, Agri-Food and Biosciences Institute

14.30 meeting with Mark Horton from Irish The Rivers Trust  
Ballinderry Rivers Trust, 231a Orritor Road, Cookstown, County Tyrone, BT80 9NB

Clayton Hotel Dublin Airport

#### Friday 15<sup>th</sup>

Departure Dublin 13.30